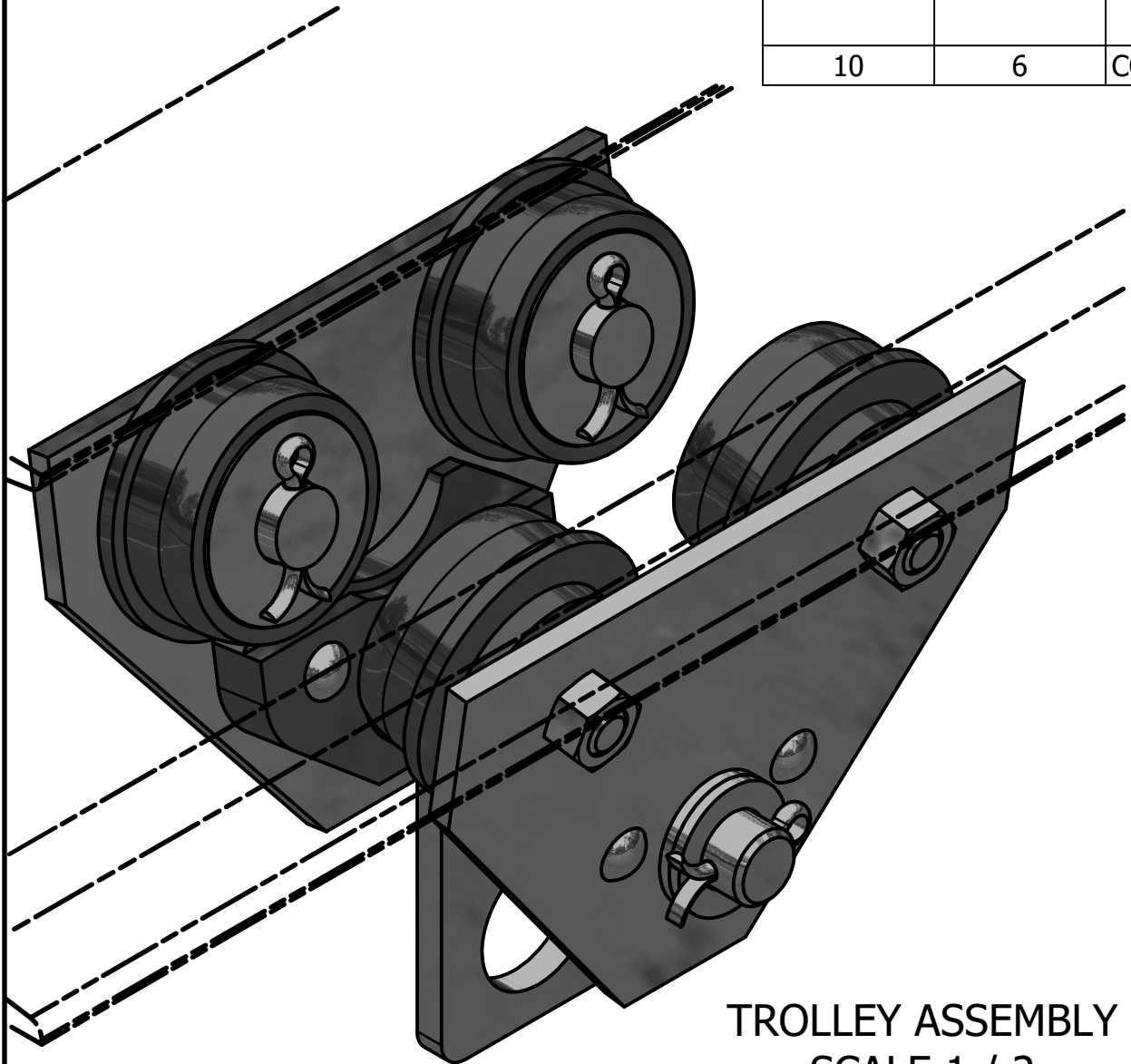


METRIC



TROLLEY ASSEMBLY  
SCALE 1 / 2

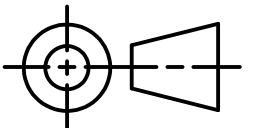
PARTS LIST

ITEM	QTY	PART NUMBER	MATERIAL	DESCRIPTION
1	2	SIDE PLATE SUB-ASSEMBLY		
1.1	1	SIDE PLATE	MILD STEEL	
1.2	1	GUIDE	CAST IRON	
1.3	2	RIVET	STANDARD	BUTTON HEAD, Ø10 X 60 LONG
2	1	AXLE	COLD ROLLED STEEL	
3	1	HOOK	MILD STEEL	10 THICK
4	44	ROLLER BEARING	COLD ROLLED STEEL	
5	4	WHEEL	CAST IRON	
6	4	WHEEL AXLE	COLD ROLLED STEEL	
7	12	ADJUSTING WASHER	STEEL	Ø26ID X Ø44OD X 4 THICK
8	4	WASHER	STANDARD	Ø26ID X Ø65OD X 3 THICK
9	4	LOCKNUT	STANDARD	M16 X 2 (PREVAILING TORQUE INSERT-TYPE)
10	6	COTTER PIN	STANDARD	Ø6 X 40 LONG



DIGITAL DESIGN  
GRAPHICS  
TECHNOLOGY

WWW.DDGT.NET



TOLERANCES UNLESS SPECIFIED:  
DECIMAL INCHES:  
X = ±.020  
XX = ±.010  
XXX = ±.005  
FRACTIONAL ±1/64"  
ANGLES ±1 DEGREE  
SURFACES  $\sqrt{32}$

CLASS: DDGT 120

ASSIGNMENT #: 70

INVENTOR DRAWING NAME:  
TROLLEY

FIG #: 14-83

MANAGER: G. STROMMEN

DRAFTER: K LOVE

DATE: 12/3/2022

SCALE: AS NOTED

PAGE #: 1 OF 6

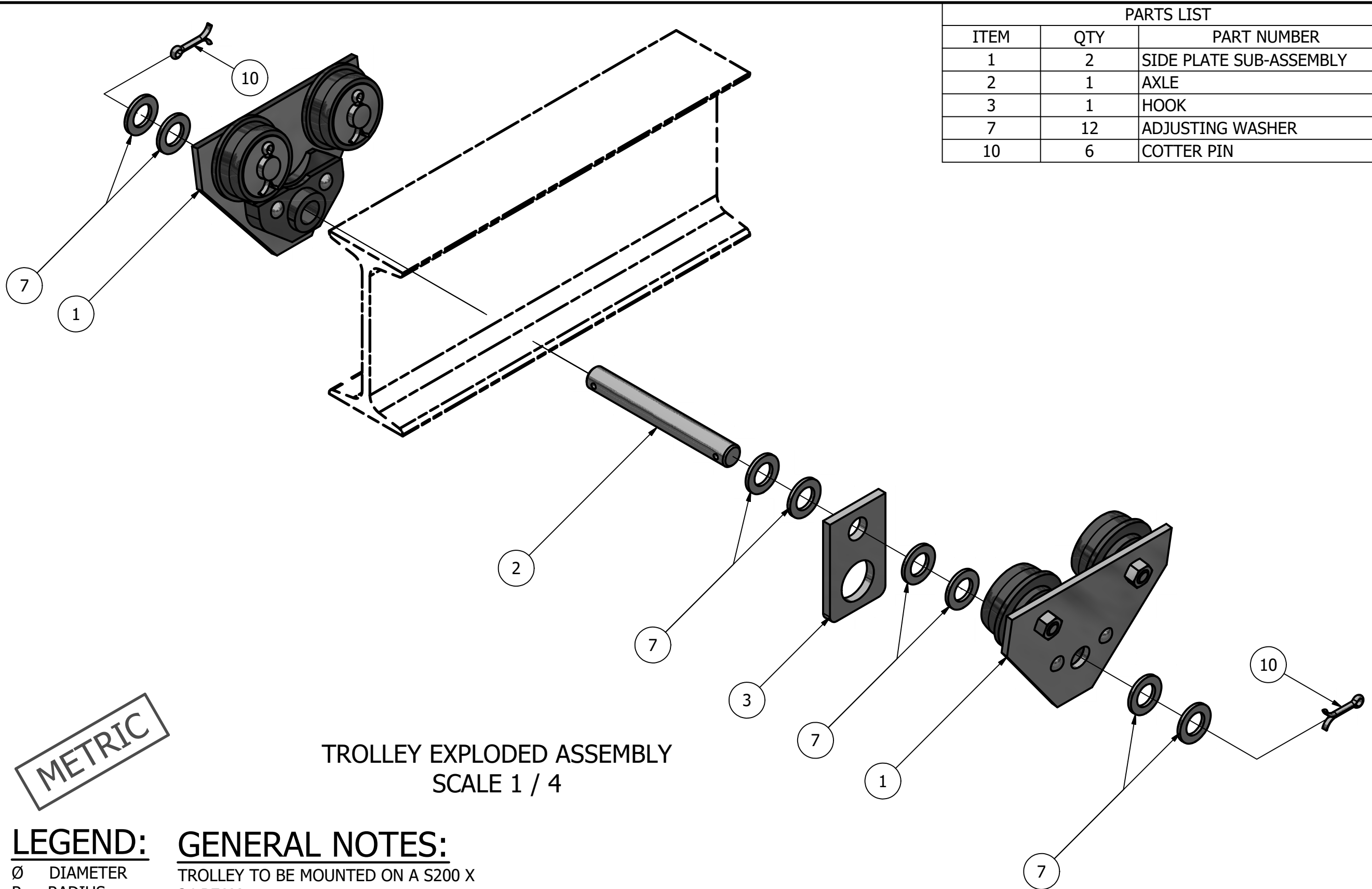
**GENERAL NOTES:**

TROLLEY TO BE MOUNTED ON A S200 X 34 BEAM

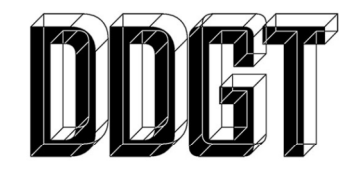
ALL CHAMFERS ARE 2 X 2 UNLESS OTHERWISE NOTED

**LEGEND:**

- Ø DIAMETER
- R RADIUS
- ° DEGREES

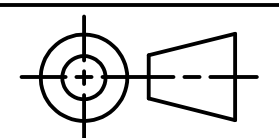


PARTS LIST		
ITEM	QTY	PART NUMBER
1	2	SIDE PLATE SUB-ASSEMBLY
2	1	AXLE
3	1	HOOK
7	12	ADJUSTING WASHER
10	6	COTTER PIN



DIGITAL DESIGN  
GRAPHICS  
TECHNOLOGY

WWW.DDGT.NET



TOLERANCES UNLESS SPECIFIED:  
 DECIMAL INCHES:  
 X = ±.020  
 XX = ±.010  
 XXX = ±.005  
 FRACTIONAL ±1/64"  
 ANGLES ±1 DEGREE  
 SURFACES <sup>32</sup>✓

CLASS: DDGT 120

ASSIGNMENT #: 70

INVENTOR DRAWING NAME:  
TROLLEY

FIG #: 14-83

MANAGER: G. STROMMEN

DRAFTER: K LOVE

DATE: 12/3/2022

SCALE: AS NOTED

PAGE #: 2 OF 6

METRIC

TROLLEY EXPLODED ASSEMBLY  
SCALE 1 / 4

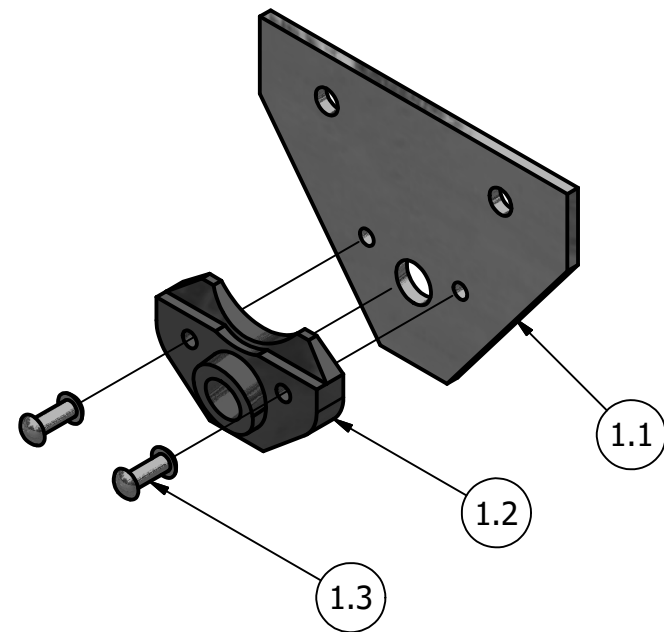
**LEGEND:**

- ∅ DIAMETER
- R RADIUS
- ° DEGREES

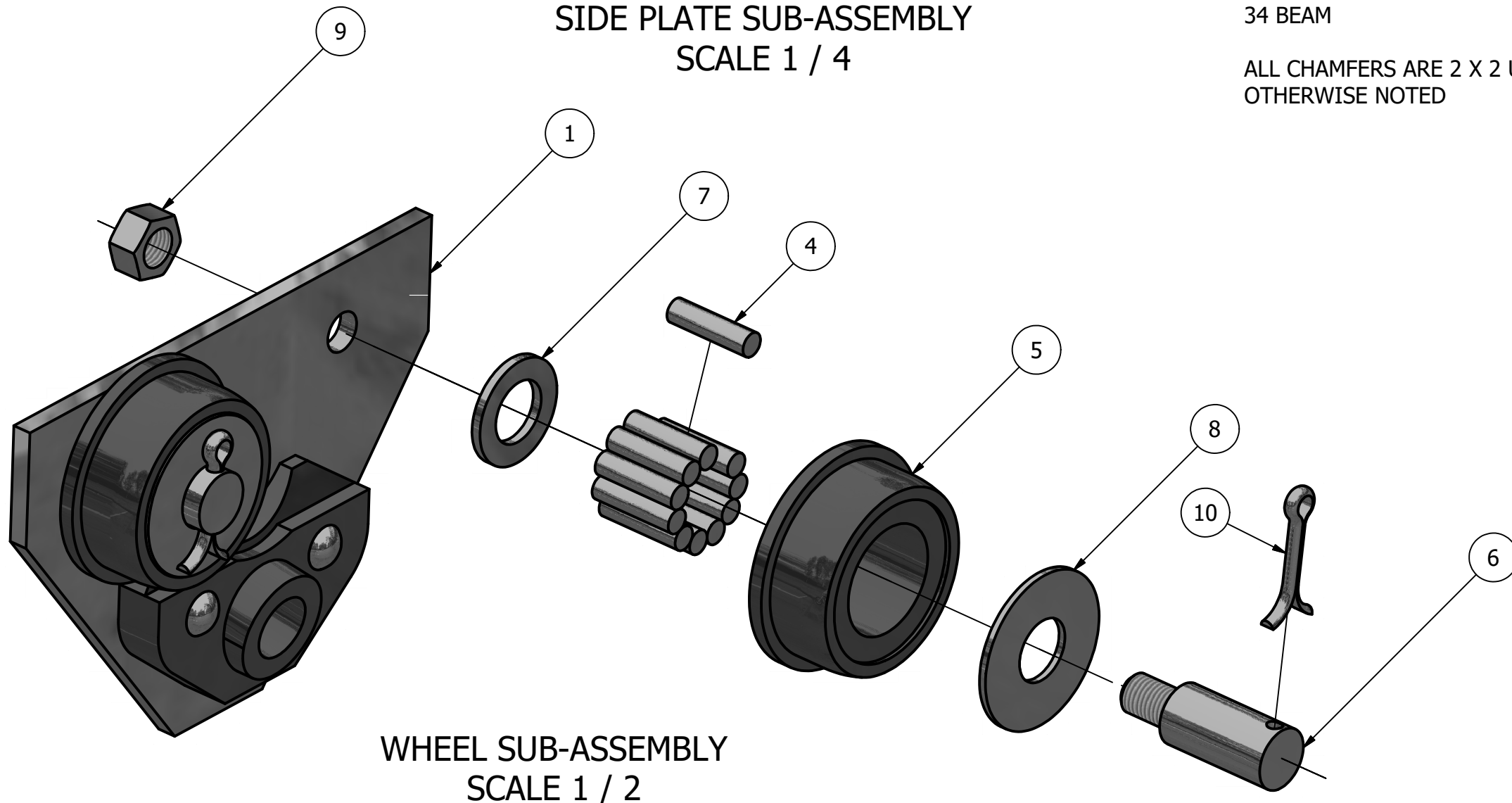
**GENERAL NOTES:**

TROLLEY TO BE MOUNTED ON A S200 X 34 BEAM

ALL CHAMFERS ARE 2 X 2 UNLESS OTHERWISE NOTED



SIDE PLATE SUB-ASSEMBLY  
SCALE 1 / 4



WHEEL SUB-ASSEMBLY  
SCALE 1 / 2

PARTS LIST

ITEM	QTY	PART NUMBER
1	2	SIDE PLATE SUB-ASSEMBLY
1.1	1	SIDE PLATE
1.2	1	GUIDE
1.3	2	RIVET
4	44	ROLLER BEARING
5	4	WHEEL
6	4	WHEEL AXLE
7	12	ADJUSTING WASHER
8	4	WASHER
9	4	LOCKNUT
10	6	COTTER PIN

GENERAL NOTES:

TROLLEY TO BE MOUNTED ON A S200 X 34 BEAM

ALL CHAMFERS ARE 2 X 2 UNLESS OTHERWISE NOTED

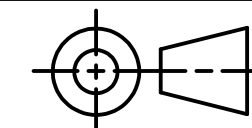
LEGEND:

∅ DIAMETER  
R RADIUS  
° DEGREES



DIGITAL DESIGN  
GRAPHICS  
TECHNOLOGY

WWW.DDGT.NET



TOLERANCES UNLESS SPECIFIED:  
DECIMAL INCHES:  
X = ±.020  
XX = ±.010  
XXX = ±.005  
FRACTIONAL ±1/64"  
ANGLES ±1 DEGREE

SURFACES 32 ✓

CLASS: DDGT 120

ASSIGNMENT #: 70

INVENTOR DRAWING NAME:  
TROLLEY

FIG #: 14-83

MANAGER: G. STROMMEN

DRAFTER: K LOVE

DATE: 12/3/2022

SCALE: AS NOTED

PAGE #: 3 OF 6

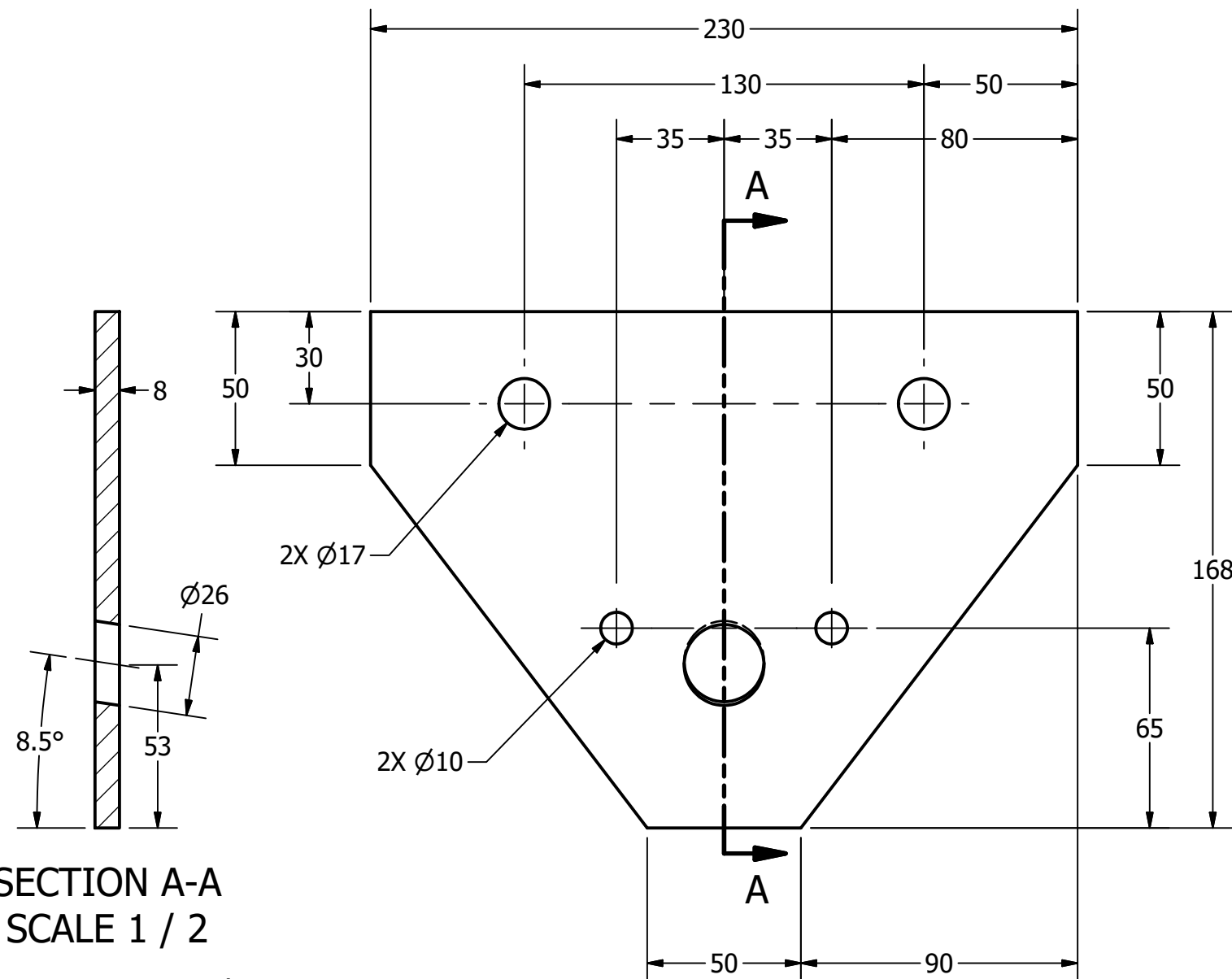
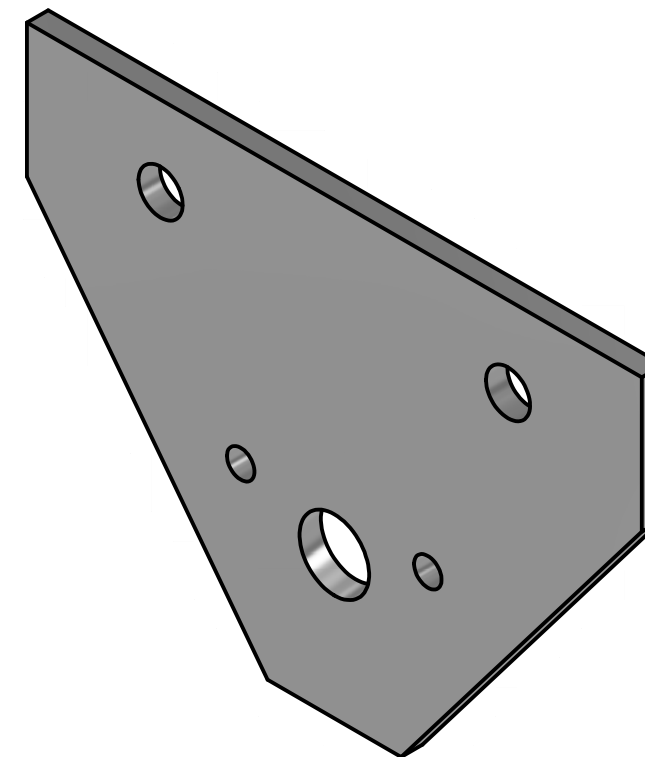
METRIC

PARTS LIST		
ITEM	QTY	PART NUMBER
1.1	2	SIDE PLATE



DIGITAL DESIGN  
GRAPHICS  
TECHNOLOGY

WWW.DDGT.NET



SECTION A-A  
SCALE 1 / 2

SIDE PLATE  
SCALE 1 / 2

METRIC

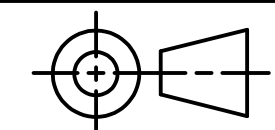
**GENERAL NOTES:**

TROLLEY TO BE MOUNTED ON A S200 X 34 BEAM

ALL CHAMFERS ARE 2 X 2 UNLESS OTHERWISE NOTED

**LEGEND:**

Ø DIAMETER  
R RADIUS  
° DEGREES



TOLERANCES UNLESS SPECIFIED:  
DECIMAL INCHES:  
X = ±.020  
XX = ±.010  
XXX = ±.005  
FRACTIONAL ±1/64"  
ANGLES ±1 DEGREE  
SURFACES 32

CLASS: DDGT 120

ASSIGNMENT #: 70

INVENTOR DRAWING NAME:  
TROLLEY

FIG #: 14-83

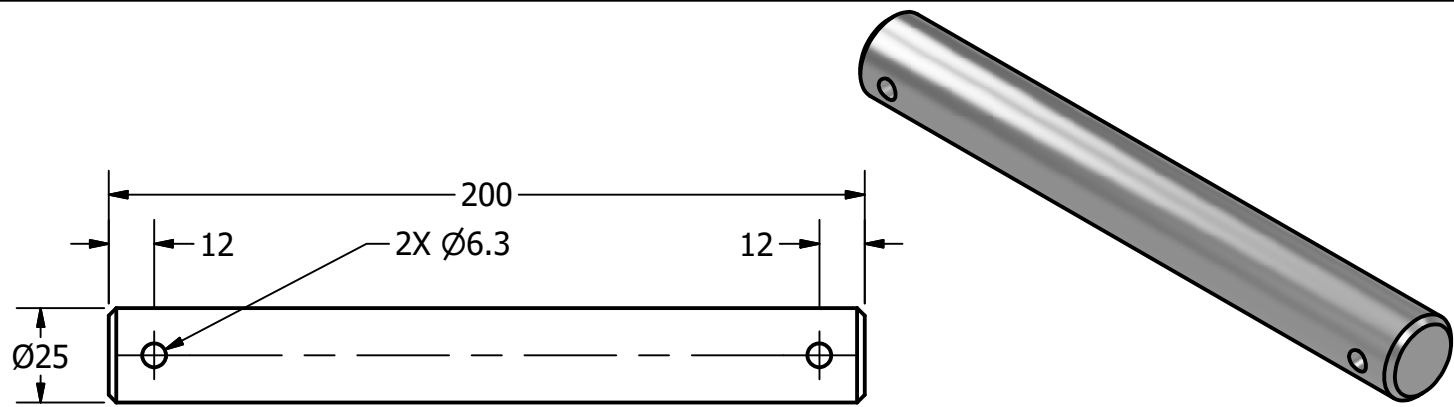
MANAGER: G. STROMMEN

DRAFTER: K LOVE

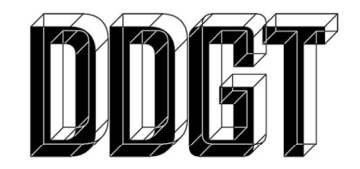
DATE: 12/3/2022

SCALE: AS NOTED

PAGE #: 4 OF 6



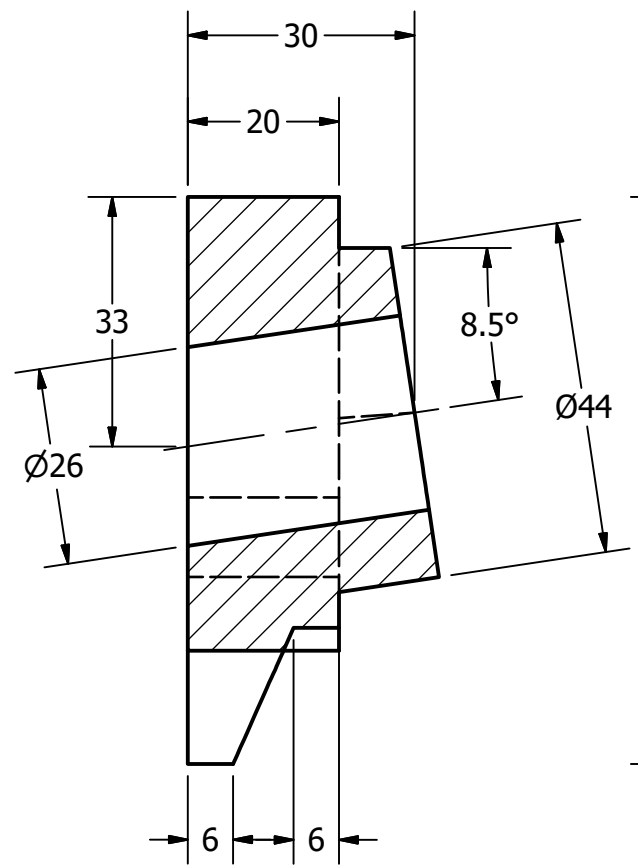
PARTS LIST		
ITEM	QTY	PART NUMBER
1.2	2	GUIDE
2	1	AXLE



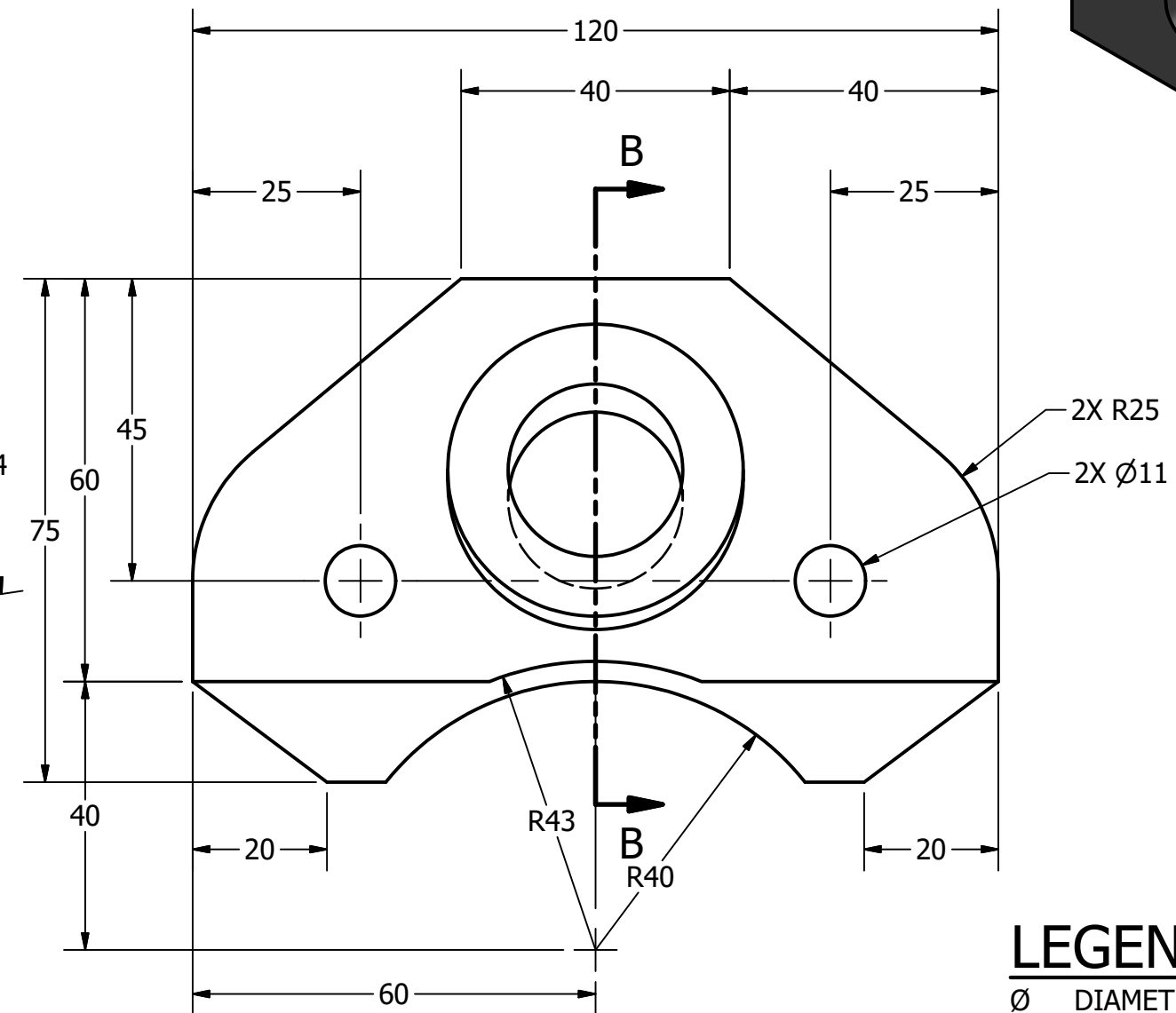
DIGITAL DESIGN  
GRAPHICS  
TECHNOLOGY

WWW.DDGT.NET

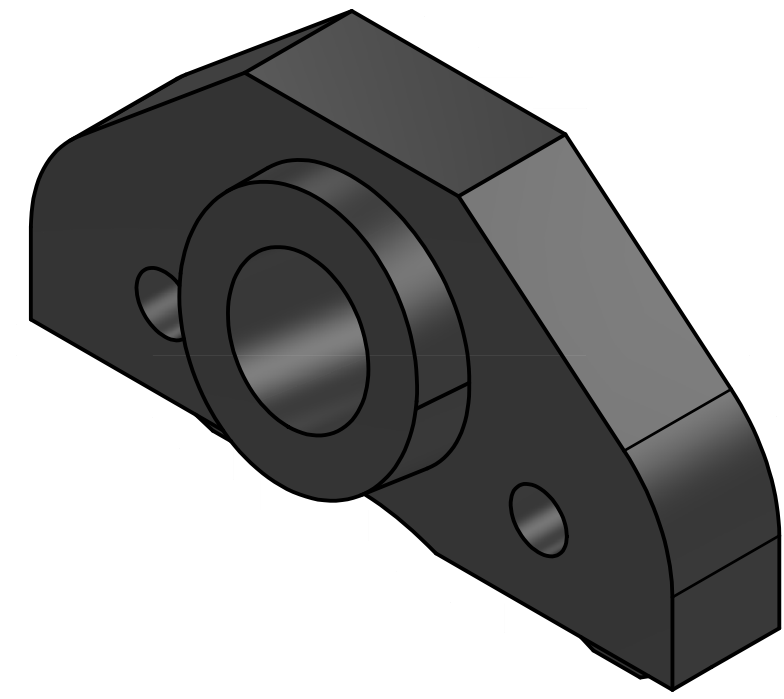
AXLE  
SCALE 1 / 2



SECTION B-B  
SCALE 1 : 1



GUIDE  
SCALE 1 : 1



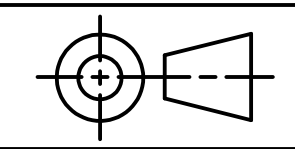
METRIC

**LEGEND:**

- Ø DIAMETER
- R RADIUS
- ° DEGREES

**GENERAL NOTES:**

TROLLEY TO BE MOUNTED ON A S200 X 34 BEAM  
ALL CHAMFERS ARE 2 X 2 UNLESS OTHERWISE NOTED



TOLERANCES UNLESS SPECIFIED:  
DECIMAL INCHES:  
X = ±.020  
XX = ±.010  
XXX = ±.005  
FRACTIONAL ±1/64"  
ANGLES ±1 DEGREE  
SURFACES 32 ✓

CLASS: DDGT 120

ASSIGNMENT #: 70

INVENTOR DRAWING NAME:  
TROLLEY

FIG #: 14-83

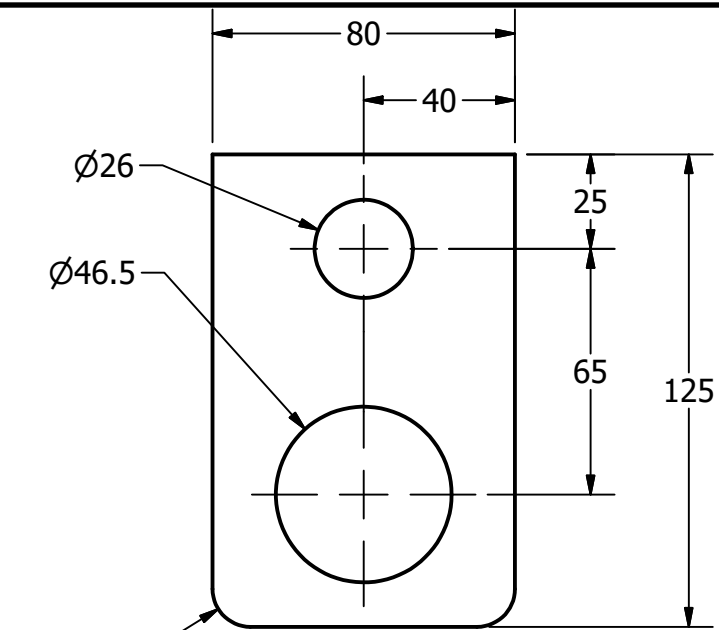
MANAGER: G. STROMMEN

DRAFTER: K LOVE

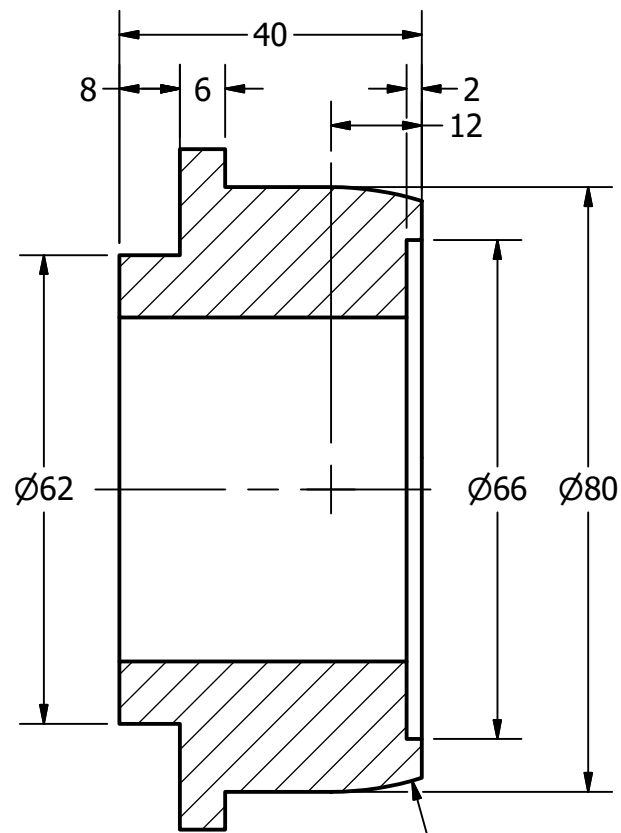
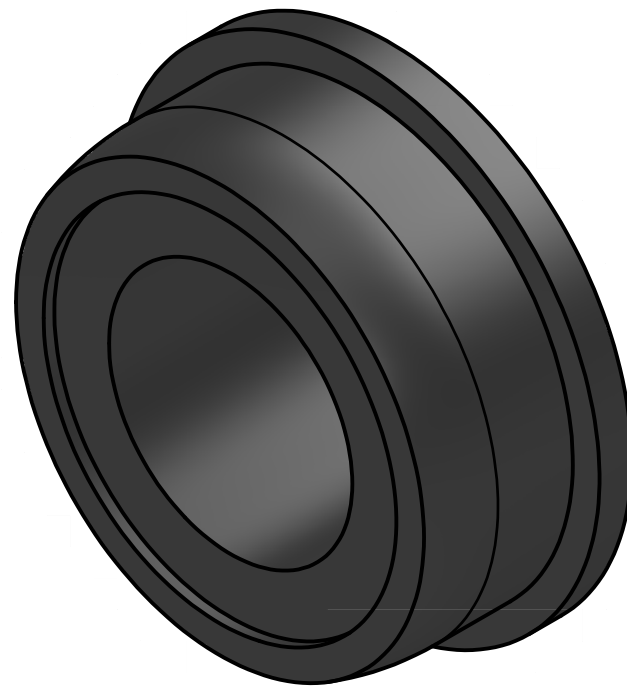
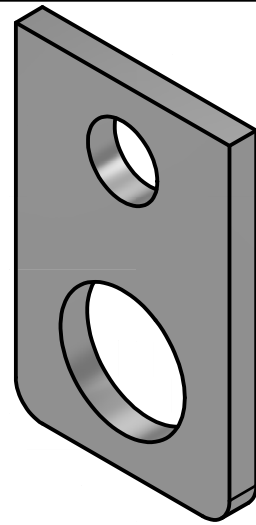
DATE: 12/3/2022

SCALE: AS NOTED

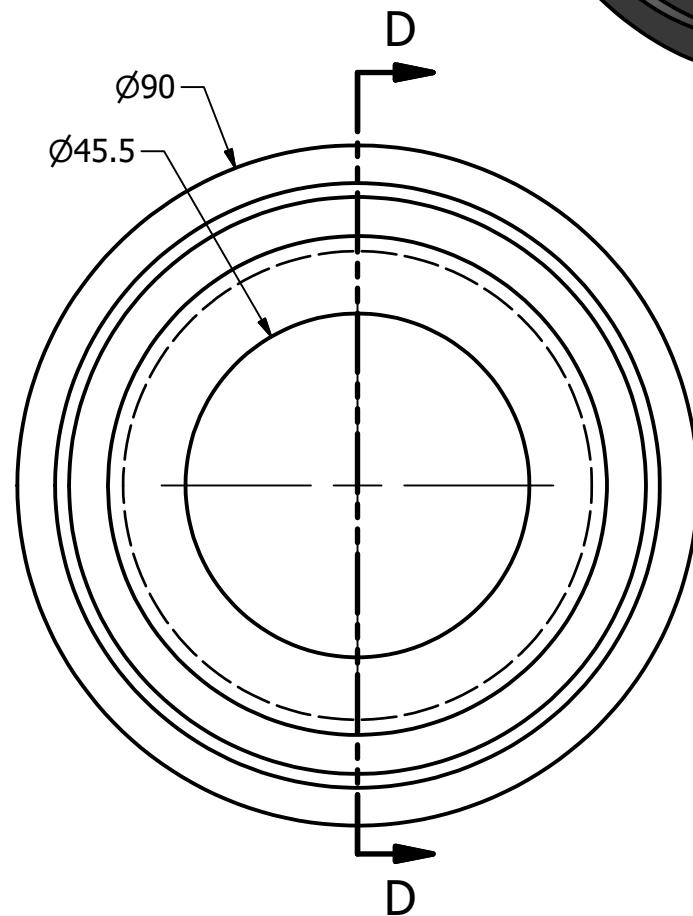
PAGE #: 5 OF 6



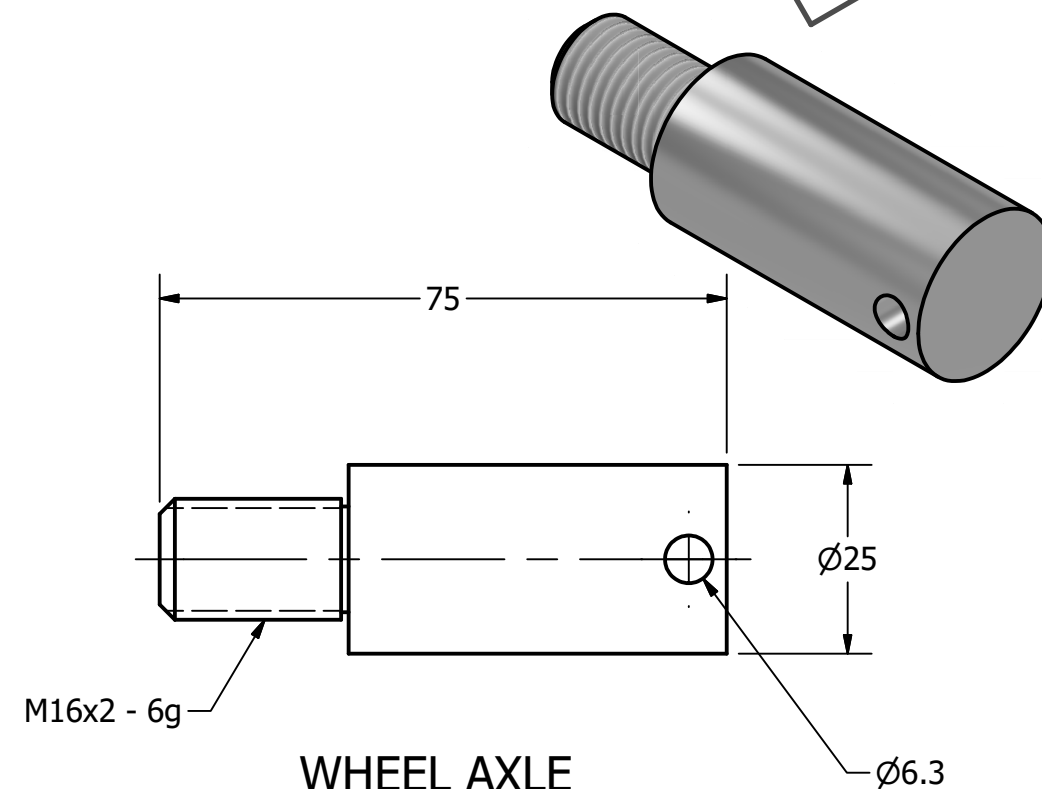
**HOOK**  
SCALE 1 / 2



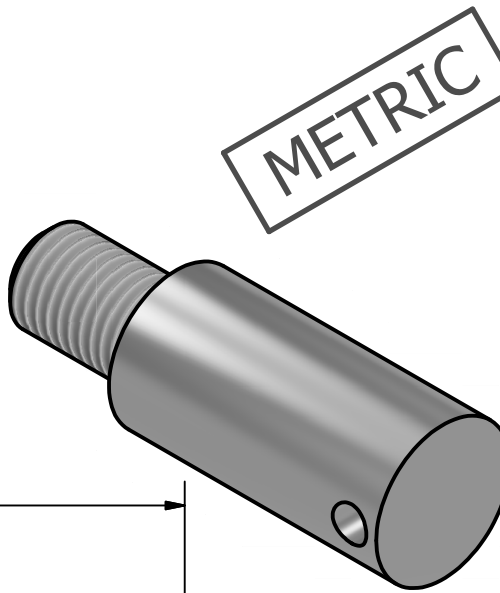
**SECTION D-D**  
SCALE 1 : 1



**WHEEL**  
SCALE 1 : 1



**WHEEL AXLE**  
SCALE 1 : 1



PARTS LIST		
ITEM	QTY	PART NUMBER
3	1	HOOK
5	4	WHEEL
6	4	WHEEL AXLE

**GENERAL NOTES:**

TROLLEY TO BE MOUNTED ON A S200 X 34 BEAM

ALL CHAMFERS ARE 2 X 2 UNLESS OTHERWISE NOTED

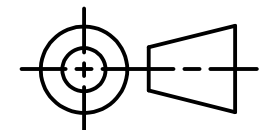
**LEGEND:**

- Ø DIAMETER
- R RADIUS
- ° DEGREES



DIGITAL DESIGN  
GRAPHICS  
TECHNOLOGY

WWW.DDGT.NET



TOLERANCES UNLESS SPECIFIED:  
DECIMAL INCHES:  
X = ±.020  
XX = ±.010  
XXX = ±.005  
FRACTIONAL ±1/64"  
ANGLES ±1 DEGREE  
SURFACES 32 ✓

CLASS: DDGT 120

ASSIGNMENT #: 70

INVENTOR DRAWING NAME:  
TROLLEY

FIG #: 14-83

MANAGER: G. STROMMEN

DRAFTER: K LOVE

DATE: 12/3/2022

SCALE: AS NOTED

PAGE #: 6 OF 6